

MVE



*Perfect Replacement
for Italvibras® and
OLI® Vibrator Motors.*

The MVE series, developed from the MV series, is specifically designed for industrial applications involving explosive gases and dust particles.

It is suitable for use in zone 1 and zone 2 (gas) as well as zone 21 and zone 22 (dust), providing centrifugal forces of up to 130 kN.

Technical features

Power supply

Three-phase voltage from 220V to 690V, 50Hz or 60Hz.

Polarity

2, 4, 6 and 8 standard poles.

Level of protection

Ex db IIC T4 Gb (Zone 1 & 2)
Ex tb IIIC T130°C Db (Zone 21 & 22)

Conformity with standards and regulations

GB/T 3836.1-2021;
GB/T 3836.2-2021;
GB/T 3836.31-2021.

Centrifugal force

Extended range up to 130 kN, with adjustable centrifugal force achieved by changing the position of the eccentric weights.

Functioning

Continuous operation (S1) is supported at maximum centrifugal force and electric power.

Mechanical protection

IP66.

Insulation class

Class F (155°C), class H (180°C) on request.

Ambient temperature

From -20°C to +40°C.

Vibrator thermal protection

Standard PTC thermistor heat detectors rated at 130°C.

Casing and bearing flange

In spheroidal cast iron for all sizes.

Terminal box

Large terminal box to facilitate electrical connection.

Bearings

Custom-designed single-row cylindrical roller bearings with large clearance effectively balance motor heat dissipation and vibration resistance. These bearings provide a theoretical lifespan of up to 20,000 hours. SKF and NSK bearings are also available upon request.

Lubrication

All vibrators are pre-lubricated at the factory and require no additional lubrication at start-up.

Windings

Special windings are designed for low energy consumption and exceptionally high tightening torque, enabling the motors to accelerate rapidly to nominal speed and achieve quick synchronization.

Eccentric weights

Allow adjustment of the centrifugal force from 0 to 100% according to the graduated scale on the eccentric weights. (Standard supply: setting at 80%)

Available on request

- Stainless steel covers for eccentric weights;
- Customizable fixing holes.

Testing

Each unit undergoes a rigorous dynamic test with eccentric weights before leaving the factory.



Compliance with the applicable European Union directives.

MVE

2 poles - 3,000rpm / 50Hz / 380V - 3,600rpm / 60Hz / 460V

DESCRIPTION			MECHANICAL SPECIFICATIONS								ELECTRICAL SPECIFICATIONS					
Type	Type	Size	Centrifugal Force				Static Moment		Weight		Input Power		Power Factor		Nominal Current	
50Hz	60Hz		[kN]		[kg]		[kgmm]		[kg]		[kW]		[cos ø]		[A]	
50Hz	60Hz		50Hz	60Hz	50Hz	60Hz	50Hz	60Hz	50Hz	60Hz	50Hz	60Hz	50Hz	60Hz	50Hz	60Hz
MVE 300/3	MVE 300/36	50	3	3	306	306	30	21	40	39	0.18	0.18	0.74	0.74	0.5	0.4
MVE 500/3	MVE 500/36	50	5	5	510	510	51	35	40	39	0.37	0.37	0.78	0.78	1.0	1.0
MVE 800/3	MVE 800/36	50	8	8	815	815	81	56	42	41	0.55	0.55	0.80	0.80	1.4	1.5
MVE 1200/3	MVE 1200/36	50	10	10	1019	1019	101	70	44	43	0.75	0.75	0.81	0.81	1.8	1.9
MVE 1300/3	MVE 1300/36	50	13	13	1325	1325	132	92	45	44	1.10	1.10	0.82	0.82	2.4	2.2
MVE 1600/3	MVE 1600/36	60	16	16	1631	1631	162	113	52	51	1.25	1.25	0.83	0.83	2.9	2.6
MVE 2000/3	MVE 2000/36	60	20	20	2039	2039	203	141	54	53	2.00	2.00	0.85	0.85	3.7	3.4
MVE 2300/3	MVE 2300/36	60	23	23	2345	2345	233	162	55	54	2.00	2.00	0.86	0.86	4.4	3.9
MVE 3200/3	MVE 3200/36	75	32	32	3262	3262	325	225	99	97	2.20	2.20	0.87	0.87	5.3	4.6
MVE 4000/3	MVE 4000/36	80	40	40	4077	4077	406	282	134	130	2.30	2.30	0.88	0.88	5.3	4.6
MVE 5000/3	MVE 5000/36	80	50	50	5097	5097	507	352	136	132	3.50	3.50	0.90	0.90	7.2	6.3
MVE 6500/3	MVE 6500/36	85	65	65	6626	6626	659	458	212	208	4.40	4.40	0.90	0.90	9.5	8.0
MVE 7200/3	MVE 7200/36	85	72	72	7339	7339	730	507	222	218	4.50	4.50	0.90	0.90	11.0	10.0
MVE 9000/3	MVE 9000/36	85	90	90	9174	9174	913	634	226	222	5.30	5.30	0.91	0.91	14.0	18.0

To convert kg into Newton: $N = 9.81 \cdot kg$

Working moment = 2 x static moment

MVE

2 poles - 3,000rpm / 50Hz / 380V - 3,600rpm / 60Hz / 460V

Type		DIMENSIONAL SPECIFICATIONS (mm)															
50Hz	60Hz	Size	Fig.	L	M	N	A	B	ØG	N° Holes	C	D	E	F	H	K	Hexagon Screws
MVE 300/3	MVE 300/36	50	A	393	194	256	120	170	17	4	204	209	24	54.5	102	182	M16
MVE 500/3	MVE 500/36	50	A	393	194	256	120	170	17	4	204	209	24	54.5	102	182	M16
MVE 800/3	MVE 800/36	50	A	393	194	256	120	170	17	4	204	209	24	54.5	102	182	M16
MVE 1200/3	MVE 1200/36	50	A	393	194	256	120	170	17	4	204	209	24	54.5	102	182	M16
MVE 1300/3	MVE 1300/36	50	A	393	194	256	120	170	17	4	204	209	24	54.5	102	182	M16
MVE 1600/3	MVE 1600/36	60	A	472	234	283	140	190	17	4	238	234	25	59.5	124	223	M16
MVE 2000/3	MVE 2000/36	60	A	472	234	283	140	190	17	4	238	234	25	59.5	124	223	M16
MVE 2300/3	MVE 2300/36	60	A	472	234	283	140	190	17	4	238	234	25	59.5	124	223	M16
MVE 3200/3	MVE 3200/36	75	A	492	294	325	155	255	23.5	4	275	304	33	82	153	283	M20
MVE 4000/3	MVE 4000/36	80	A	590	330	356	180	280	26	4	305	335	35	72.5	173	400	M24
MVE 5000/3	MVE 5000/36	80	A	590	330	356	180	280	26	4	305	335	35	72.5	173	400	M24
MVE 6500/3	MVE 6500/36	85	A	664	392	421	200	320	28	4	355	390	35	90	202	380	M24
MVE 7200/3	MVE 7200/36	85	A	664	392	421	200	320	28	4	355	390	35	90	202	380	M24
MVE 9000/3	MVE 9000/36	85	A	664	392	421	200	320	28	4	355	390	35	90	202	380	M24

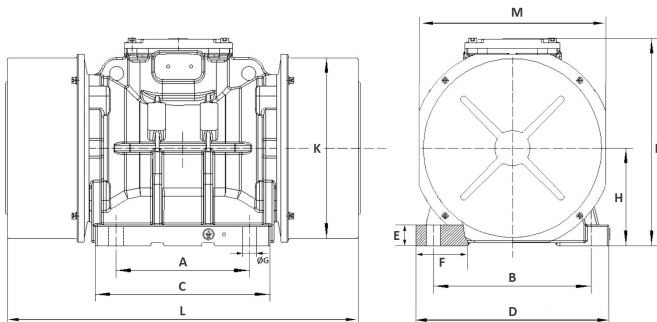


Fig. A

MVE

4 poles - 1,500rpm / 50Hz / 380V - 1,800rpm / 60Hz / 460V

DESCRIPTION			MECHANICAL SPECIFICATIONS								ELECTRICAL SPECIFICATIONS					
Type	Type	Size	Centrifugal Force				Static Moment		Weight		Input Power		Power Factor		Nominal Current	
50Hz	60Hz		[kN]		[kg]		[kgmm]		[kg]		[kW]		[cos ø]		[A]	
50Hz	60Hz		50Hz	60Hz	50Hz	60Hz	50Hz	60Hz	50Hz	60Hz	50Hz	60Hz	50Hz	60Hz	50Hz	60Hz
MVE 300/15	MVE 300/18	50	2	2	204	204	81	56	47	45	0.12	0.12	0.66	0.66	0.7	0.7
MVE 500/15	MVE 500/18	50	5	5	510	510	203	141	50	58	0.25	0.25	0.68	0.68	1.3	1.4
MVE 700/15	MVE 700/18	50	7	7	714	714	284	197	55	52	0.37	0.37	0.72	0.72	1.3	1.4
MVE 800/15	MVE 800/18	50	8	8	815	815	325	225	56	53	0.40	0.40	0.75	0.75	1.4	1.5
MVE 1100/15	MVE 1100/18	50	11	11	1121	1121	446	310	60	56	0.40	0.40	0.75	0.75	1.5	1.7
MVE 1400/15	MVE 1400/18	60	14	14	1427	1427	568	394	62	60	0.45	0.45	0.78	0.78	1.7	1.8
MVE 1500/15	MVE 1500/18	60	15	15	1529	1529	609	423	62	60	0.45	0.45	0.78	0.78	1.8	1.9
MVE 1700/15	MVE 1700/18	60	17	17	1733	1733	690	479	66	64	0.75	0.75	0.82	0.82	2.2	2.1
MVE 2000/15	MVE 2000/18	60	20	20	2039	2039	811	563	75	72	0.75	0.75	0.82	0.82	2.5	2.4
MVE 2400/15	MVE 2400/18	60	24	24	2446	2446	974	676	78	75	1.00	1.00	0.82	0.82	3.0	3.2
MVE 2400/15	MVE 2400/18	70	24	24	2446	2446	974	676	98	95	1.00	1.00	0.82	0.82	3.3	3.4
MVE 2500/15	MVE 2500/18	70	25	25	2548	2548	1014	704	100	97	1.20	1.20	0.82	0.82	3.4	3.4
MVE 3000/15	MVE 3600/18	70	30	30	3058	3058	1217	845	104	100	1.50	1.50	0.85	0.85	3.7	3.8
MVE 3500/15	MVE 3500/18	75	38	38	3874	3874	1542	1071	124	120	1.72	1.72	0.85	0.85	3.9	4.0
MVE 3800/15	MVE 3800/18	75	38	38	3874	3874	1542	1071	126	122	1.72	1.72	0.85	0.85	4.1	4.1
MVE 4300/15	MVE 4300/18	75	43	43	4383	4383	1744	1211	129	125	1.94	1.94	0.85	0.85	5.7	5.8
MVE 5000/15	MVE 5000/18	80	50	50	5097	5097	2028	1409	161	156	2.20	2.20	0.85	0.85	6.0	6.1
MVE 5300/15	MVE 5300/18	80	50	50	5097	5097	2028	1409	164	160	2.20	2.20	0.85	0.85	6.3	6.4
MVE 5500/15	MVE 5500/18	80	55	55	5607	5607	2231	1550	165	161	2.20	2.20	0.85	0.85	6.5	6.6
MVE 7200/15	MVE 7200/18	85	72	72	7339	7339	2921	2028	250	245	3.00	3.00	0.85	0.85	9.6	9.4
MVE 9000/15	MVE 9000/18	85	90	90	9174	9174	3651	2536	280	275	5.00	5.00	0.85	0.85	12.0	12.0
MVE 7200/15	MVE 7200/18	90	72	72	7339	7339	2921	2028	395	393	3.00	3.00	0.85	0.85	10.5	10.5
MVE 9000/15	MVE 9000/18	90	90	90	9174	9174	3651	2536	402	400	5.00	5.00	0.85	0.85	13.0	13.0
MVE 10000/15	MVE 12000/18	90	100	100	10194	10194	4057	2817	417	412	5.80	5.80	0.85	0.85	13.5	13.5

To convert kg into Newton: $N = 9.81 \cdot kg$

Working moment = 2 x static moment

MVE

4 poles - 1,500rpm / 50Hz / 380V - 1,800rpm / 60Hz / 460V

Type		DIMENSIONAL SPECIFICATIONS (mm)															Hexagon Screws
50Hz	60Hz	Size	Fig.	L	M	N	A	B	ØG	N° Holes	C	D	E	F	H	K	
MVE 300/15	MVE 300/18	50	A	393	194	256	120	170	17	4	204	209	24	54.5	102	182	M16
MVE 500/15	MVE 500/18	50	A	393	194	256	120	170	17	4	204	209	24	54.5	102	182	M16
MVE 700/15	MVE 700/18	50	A	413	194	256	120	170	17	4	204	209	24	54.5	102	182	M16
MVE 800/15	MVE 800/18	50	A	460	194	256	120	170	17	4	204	209	24	54.5	102	182	M16
MVE 1100/15	MVE 1100/18	50	A	460	194	256	120	170	17	4	204	209	24	54.5	102	182	M16
MVE 1400/15	MVE 1400/18	60	A	492	234	283	140	190	17	4	238	234	25	59.5	124	223	M16
MVE 1500/15	MVE 1500/18	60	A	492	234	283	140	190	17	4	238	234	25	59.5	124	223	M16
MVE 1700/15	MVE 1700/18	60	A	492	234	283	140	190	17	4	238	234	25	59.5	124	223	M16
MVE 2000/15	MVE 2000/18	60	A	532	234	283	140	190	17	4	238	234	25	59.5	124	223	M16
MVE 2400/15	MVE 2400/18	60	A	532	234	283	140	190	17	4	238	234	25	59.5	124	223	M16
MVE 2400/15	MVE 2400/18	70	A	517	270	310	155	225	22	4	250	275	30	70	142	259	M20
MVE 2500/15	MVE 2500/18	70	A	517	270	310	155	225	22	4	250	275	30	70	142	259	M20
MVE 3000/15	MVE 3600/18	70	A	517	270	310	155	225	22	4	250	275	30	70	142	259	M20
MVE 3500/15	MVE 3500/18	75	A	552	294	325	155	255	23.5	4	275	304	33	82	153	283	M20
MVE 3800/15	MVE 3800/18	75	A	552	294	325	155	255	23.5	4	275	304	33	82	153	283	M20
MVE 4300/15	MVE 4300/18	75	A	552	294	325	155	255	23.5	4	275	304	33	82	153	283	M20
MVE 5000/15	MVE 5000/18	80	A	590	330	356	180	280	26	4	305	335	35	72.5	173	400	M24
MVE 5300/15	MVE 5300/18	80	A	590	330	356	180	280	26	4	305	335	35	72.5	173	400	M24
MVE 5500/15	MVE 5500/18	80	A	590	330	356	180	280	26	4	305	335	35	72.5	173	400	M24
MVE 7200/15	MVE 7200/18	85	A	664	392	421	200	320	28	4	355	390	35	90	202	380	M24
MVE 9000/15	MVE 9000/18	85	A	664	392	421	200	320	28	4	355	390	35	90	202	380	M24
MVE 7200/15	MVE 7200/18	90	B	766	402	440	125	380	39	6	385	452	40	106	207	420	M36
MVE 9000/15	MVE 9000/18	90	B	766	402	440	125	380	39	6	385	452	40	106	207	420	M36
MVE 10000/15	MVE 12000/18	90	B	766	402	440	125	380	39	6	385	452	40	106	207	420	M36

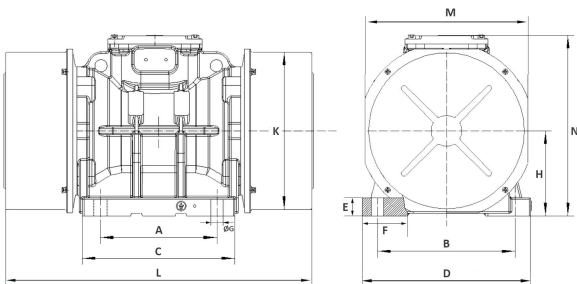


Fig. A

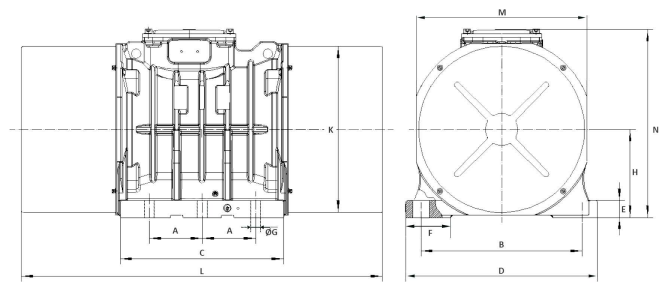


Fig. B

MVE

6 poles - 1,000rpm / 50Hz / 380V - 1,200rpm /60Hz / 460V

DESCRIPTION			MECHANICAL SPECIFICATIONS								ELECTRICAL SPECIFICATIONS					
Type	Type	Size	Centrifugal Force				Static Moment		Weight		Input Power		Power Factor		Nominal Current	
50Hz	60Hz		[kN]	[kg]	[kgmm]	[kg]	[kW]	[cos ø]	[A]	50Hz	60Hz	50Hz	60Hz	50Hz	60Hz	
MVE 300/1	MVE 300/12	50	3	3	306	306	274	190	53	50	0.16	0.16	0.65	0.65	0.7	0.6
MVE 500/1	MVE 500/12	50	5	5	510	510	456	317	60	55	0.37	0.37	0.65	0.65	1.2	1.1
MVE 800/1	MVE 800/12	60	8	8	815	815	730	507	66	62	0.45	0.45	0.65	0.65	1.4	1.3
MVE 1100/1	MVE 1100/12	60	11	11	1121	1121	1004	697	73	69	0.55	0.55	0.66	0.66	1.4	1.3
MVE 1500/1	MVE 1800/12	60	15	15	1529	1529	1369	951	88	83	0.70	0.70	0.68	0.68	2.1	2.0
MVE 1600/1	MVE 1600/12	60	16	16	1631	1631	1461	1014	102	97	0.75	0.75	0.68	0.68	2.1	2.0
MVE 1600/1	MVE 1600/12	70	16	16	1631	1631	1461	1014	105	100	0.75	0.75	0.68	0.68	2.8	3.2
MVE 1620/1	MVE 1620/12	70	16.2	16.2	1651	1651	1479	1027	107	102	0.75	0.75	0.68	0.68	2.8	3.2
MVE 2100/1	MVE 2100/12	70	21	21	2141	2141	1917	1331	120	115	1.10	1.10	0.71	0.71	3.0	3.0
MVE 2600/1	MVE 2600/12	75	26	26	2650	2650	2373	1648	149	144	1.50	1.50	0.72	0.72	3.6	3.4
MVE 3000/1	MVE 3600/12	75	30	30	3058	3058	2738	1902	157	152	1.70	1.70	0.73	0.73	4.5	4.3
MVE 3800/1	MVE 3800/12	80	38	38	3874	3874	3469	2409	187	181	2.00	2.00	0.73	0.73	4.7	4.5
MVE 4700/1	MVE 4700/12	80	47	47	4791	4791	4290	2979	205	195	2.35	2.35	0.73	0.73	4.7	4.5
MVE 4700/1	MVE 4700/12	85	47	47	4791	4791	4290	2979	285	280	2.35	2.35	0.73	0.73	6.5	6.2
MVE 5200/1	MVE 5200/12	85	52	52	5301	5301	4747	3296	290	285	2.60	2.60	0.73	0.73	6.9	6.4
MVE 6500/1	MVE 6500/12	85	65	65	6626	6626	5933	4120	310	300	3.30	3.30	0.74	0.74	7.8	7.8
MVE 7200/1	MVE 7200/12	85	72	72	7339	7339	6572	4564	336	330	3.30	3.30	0.74	0.74	8.5	8.5
MVE 8000/1	MVE 8000/12	85	80	80	8155	8155	7303	5071	348	341	4.00	4.00	0.75	0.75	9.5	9.5
MVE 9000/1	MVE 9000/12	85	90	90	9174	9174	8215	5705	360	350	4.00	4.00	0.75	0.75	10.5	10.8
MVE 6500/1	MVE 6500/12	90	65	65	6626	6626	5933	4120	410	405	3.30	3.30	0.74	0.74	9.5	9.5
MVE 7200/1	MVE 7200/12	90	72	72	7339	7339	6572	4564	415	410	3.30	3.30	0.74	0.74	10.0	10.0
MVE 8000/1	MVE 8000/12	90	80	80	8155	8155	7303	5071	430	425	4.00	4.00	0.75	0.75	12.6	11.6
MVE 9000/1	MVE 9000/12	90	90	90	9174	9174	8215	5705	435	430	4.00	4.00	0.75	0.75	13.2	12.6
MVE 10000/1	MVE 12000/12	90	100	100	10194	10194	9128	6339	457	452	5.50	5.50	0.76	0.76	13.5	12.7
MVE 11400/1	MVE 11400/12	90	114	114	11621	11621	10406	7226	475	470	5.50	5.50	0.76	0.76	15.0	14.5
MVE 13000/1	MVE 13600/12	90	130	130	13252	13252	11867	8241	498	493	7.50	7.50	0.76	0.76	17.0	16.0

To convert kg into Newton: N =9.81*kg

Working moment = 2 x static moment

MVE

6 poles - 1,000rpm / 50Hz / 380V - 1,200rpm /60Hz / 460V

Type				DIMENSIONAL SPECIFICATIONS (mm)													
50Hz	60Hz	Size	Fig.	L	M	N	A	B	ØG	N° Holes	C	D	E	F	H	K	Hexagon Screws
MVE 300/1	MVE 300/12	50	A	413	194	256	120	170	17	4	204	209	24	54.5	102	182	M16
MVE 500/1	MVE 500/12	50	A	460	194	256	120	170	17	4	204	209	24	54.5	102	182	M16
MVE 800/1	MVE 800/12	60	A	492	234	283	140	190	17	4	238	234	25	59.5	124	223	M16
MVE 1100/1	MVE 1100/12	60	A	532	234	283	140	190	17	4	238	234	25	59.5	124	223	M16
MVE 1500/1	MVE 1800/12	60	A	592	234	283	140	190	17	4	238	234	25	59.5	124	223	M16
MVE 1600/1	MVE 1600/12	60	A	592	234	283	140	190	17	4	238	234	25	59.5	124	223	M16
MVE 1600/1	MVE 1600/12	70	A	537	270	310	155	225	22	4	250	275	30	70	142	259	M20
MVE 1620/1	MVE 1620/12	70	A	537	270	310	155	225	22	4	250	275	30	70	142	259	M20
MVE 2100/1	MVE 2100/12	70	A	577	270	310	155	225	22	4	250	275	30	70	142	259	M20
MVE 2600/1	MVE 2600/12	75	A	612	294	325	155	255	23.5	4	275	304	33	82	153	283	M20
MVE 3000/1	MVE 3600/12	75	A	612	294	325	155	255	23.5	4	275	304	33	82	153	283	M20
MVE 3800/1	MVE 3800/12	80	A	670	330	356	180	280	26	4	305	335	35	72.5	173	400	M24
MVE 4700/1	MVE 4700/12	80	A	710	330	356	180	280	26	4	305	335	35	72.5	173	400	M24
MVE 4700/1	MVE 4700/12	85	A	704	392	421	200	320	28	4	355	390	35	90	202	380	M24
MVE 5200/1	MVE 5200/12	85	A	704	392	421	200	320	28	4	355	390	35	90	202	380	M24
MVE 6500/1	MVE 6500/12	85	A	744	392	421	200	320	28	4	355	390	35	90	202	380	M24
MVE 7200/1	MVE 7200/12	85	A	790	392	421	200	320	28	4	355	390	35	90	202	380	M24
MVE 8000/1	MVE 8000/12	85	A	790	392	421	200	320	28	4	355	390	35	90	202	380	M24
MVE 9000/1	MVE 9000/12	85	A	790	392	421	200	320	28	4	355	390	35	90	202	380	M24
MVE 6500/1	MVE 6500/12	90	B	826	402	440	125	380	39	6	385	452	40	106	207	420	M36
MVE 7200/1	MVE 7200/12	90	B	826	402	440	125	380	39	6	385	452	40	106	207	420	M36
MVE 8000/1	MVE 8000/12	90	B	826	402	440	125	380	39	6	385	452	40	106	207	420	M36
MVE 9000/1	MVE 9000/12	90	B	886	402	440	125	380	39	6	385	452	40	106	207	420	M36
MVE 10000/1	MVE 12000/12	90	B	886	402	440	125	380	39	6	385	452	40	106	207	420	M36
MVE 11400/1	MVE 11400/12	90	B	956	402	440	125	380	39	6	385	452	40	106	207	420	M36
MVE 13000/1	MVE 13600/12	90	B	956	402	440	125	380	39	6	385	452	40	106	207	420	M36

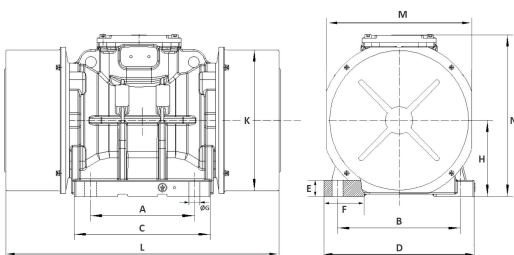


Fig. A

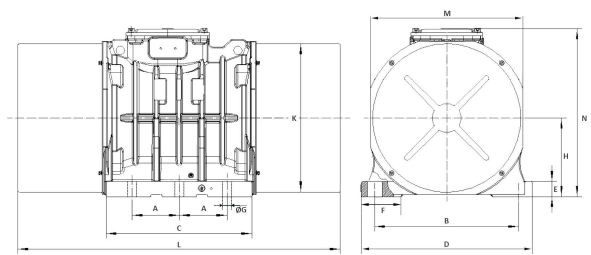


Fig. B

MVE

8 poles - 750rpm / 50Hz / 380V - 900rpm / 60Hz / 460V

DESCRIPTION			MECHANICAL SPECIFICATIONS								ELECTRICAL SPECIFICATIONS					
Type	Type	Size	Centrifugal Force				Static Moment		Weight		Input Power		Power Factor		Nominal Current	
			[kN]		[kg]		[kgmm]		[kg]		[kW]		[cos ø]		[A]	
50Hz	60Hz		50Hz	60Hz	50Hz	60Hz	50Hz	60Hz	50Hz	60Hz	50Hz	60Hz	50Hz	60Hz	50Hz	60Hz
MVE 250/075	MVE 250/090	50	2	2	204	204	325	225	56	50	0.12	0.12	0.50	0.50	1.1	1.1
MVE 400/075	MVE 400/090	50	2.5	2.5	255	255	406	282	60	45	0.12	0.12	0.55	0.55	1.1	1.1
MVE 650/075	MVE 650/090	60	4.5	4.5	459	459	730	507	65	60	0.20	0.20	0.60	0.60	1.2	1.2
MVE 900/075	MVE 900/090	60	6	6	612	612	974	676	78	73	0.25	0.25	0.56	0.56	1.2	1.3
MVE 1300/075	MVE 1300/090	70	9	9	917	917	1461	1014	110	105	0.45	0.45	0.62	0.62	2.0	1.5
MVE 1300/075	MVE 1300/090	75	9	9	917	917	1461	1014	135	130	0.45	0.45	0.62	0.62	2.5	1.8
MVE 2100/075	MVE 2100/090	75	15	15	1529	1529	2434	1690	149	144	1.00	1.00	0.63	0.63	2.8	2.9
MVE 3100/075	MVE 3100/090	80	21	21	2141	2141	3408	2367	187	180	1.40	1.40	0.71	0.71	3.8	3.8
MVE 3800/075	MVE 3800/090	80	26	26	2650	2650	4219	2930	206	200	1.75	1.75	0.72	0.72	6.0	6.0
MVE 4200/075	MVE 4200/090	85	30	30	3058	3058	4868	3381	335	330	2.00	2.00	0.72	0.72	6.5	6.5
MVE 5300/075	MVE 5300/090	85	35	35	3568	3568	5680	3944	355	350	3.30	3.30	0.73	0.73	8.5	8.0
MVE 6500/075	MVE 6500/090	85	45	45	4587	4587	7303	5071	365	360	3.30	3.30	0.74	0.74	10.0	10.0
MVE 7200/075	MVE 7200/090	90	50	50	5097	5097	8114	5635	450	445	4.00	4.00	0.74	0.74	11.5	11.0
MVE 9000/075	MVE 9000/090	90	65	65	6626	6626	10548	7325	465	460	5.00	5.00	0.76	0.76	12.5	12.0
MVE 10000/075	MVE 12000/090	90	70	70	7136	7136	11359	7889	485	480	5.00	5.00	0.76	0.76	13.5	12.5

To convert kg into Newton: N =9.81•kg

Working moment = 2 x static moment

MVE

8 poles - 750rpm / 50Hz / 380V - 900rpm / 60Hz / 460V

Type		DIMENSIONAL SPECIFICATIONS (mm)															
50Hz	60Hz	Size	Fig.	L	M	N	A	B	ØG	N° Holes	C	D	E	F	H	K	Hexagon Screws
MVE250/075	MVE250/090	50	A	460	194	256	120	170	17	4	204	209	24	54.5	102	182	M16
MVE400/075	MVE400/090	50	A	460	194	256	120	170	17	4	204	209	24	54.5	102	182	M16
MVE650/075	MVE650/090	60	A	592	234	283	140	190	17	4	238	234	25	59.5	124	223	M16
MVE900/075	MVE900/090	60	A	532	234	283	140	190	17	4	238	234	25	59.5	124	223	M16
MVE1300/075	MVE1300/090	70	A	537	270	310	155	225	22	4	250	275	30	70	142	259	M20
MVE1300/075	MVE1300/090	75	A	632	294	325	155	255	23.5	4	275	304	33	82	153	283	M20
MVE2100/075	MVE2100/090	75	A	632	294	325	155	255	23.5	4	275	304	33	82	153	283	M20
MVE3100/075	MVE3100/090	80	A	670	330	356	180	280	26	4	305	335	35	72.5	173	400	M24
MVE3800/075	MVE3800/090	80	A	710	330	356	180	280	26	4	305	335	35	72.5	173	400	M24
MVE4200/075	MVE4200/090	85	A	706	392	421	200	320	28	4	355	390	35	90	202	380	M24
MVE5300/075	MVE5300/090	85	A	744	392	421	200	320	28	4	355	390	35	90	202	380	M24
MVE6500/075	MVE6500/090	85	A	790	392	421	200	320	28	4	355	390	35	90	202	380	M24
MVE7200/075	MVE7200/090	90	B	956	402	440	125	380	39	6	385	452	40	106	207	420	M36
MVE9000/075	MVE9000/090	90	B	956	402	440	125	380	39	6	385	452	40	106	207	420	M36
MVE10000/075	MVE12000/090	90	B	956	402	440	125	380	39	6	385	452	40	106	207	420	M36

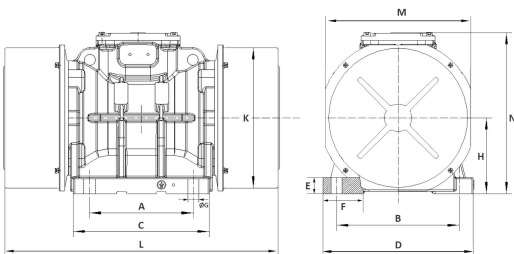


Fig. A

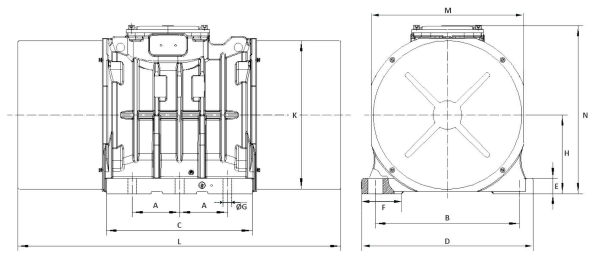


Fig. B